

Figure 1. The complete layout of lens Integrated field correcting optics assembly consisting five lenses.

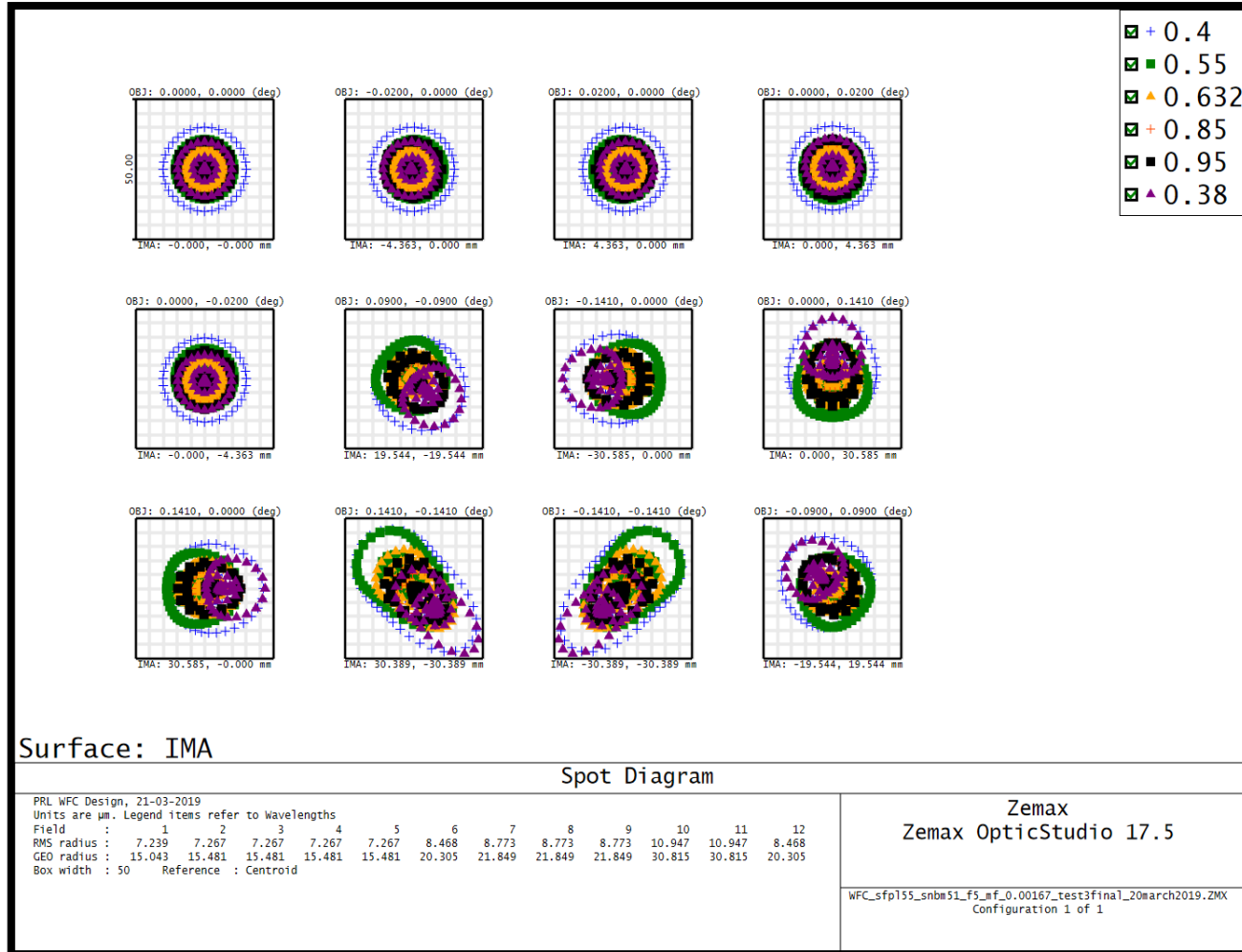


Figure 2. Spots defining PSF at the Detector at various wavelengths. $15\mu\text{m}$ is the pixel size of the detector. Please note that the box size shown above is $50\mu\text{m} \times 50\mu\text{m}$.

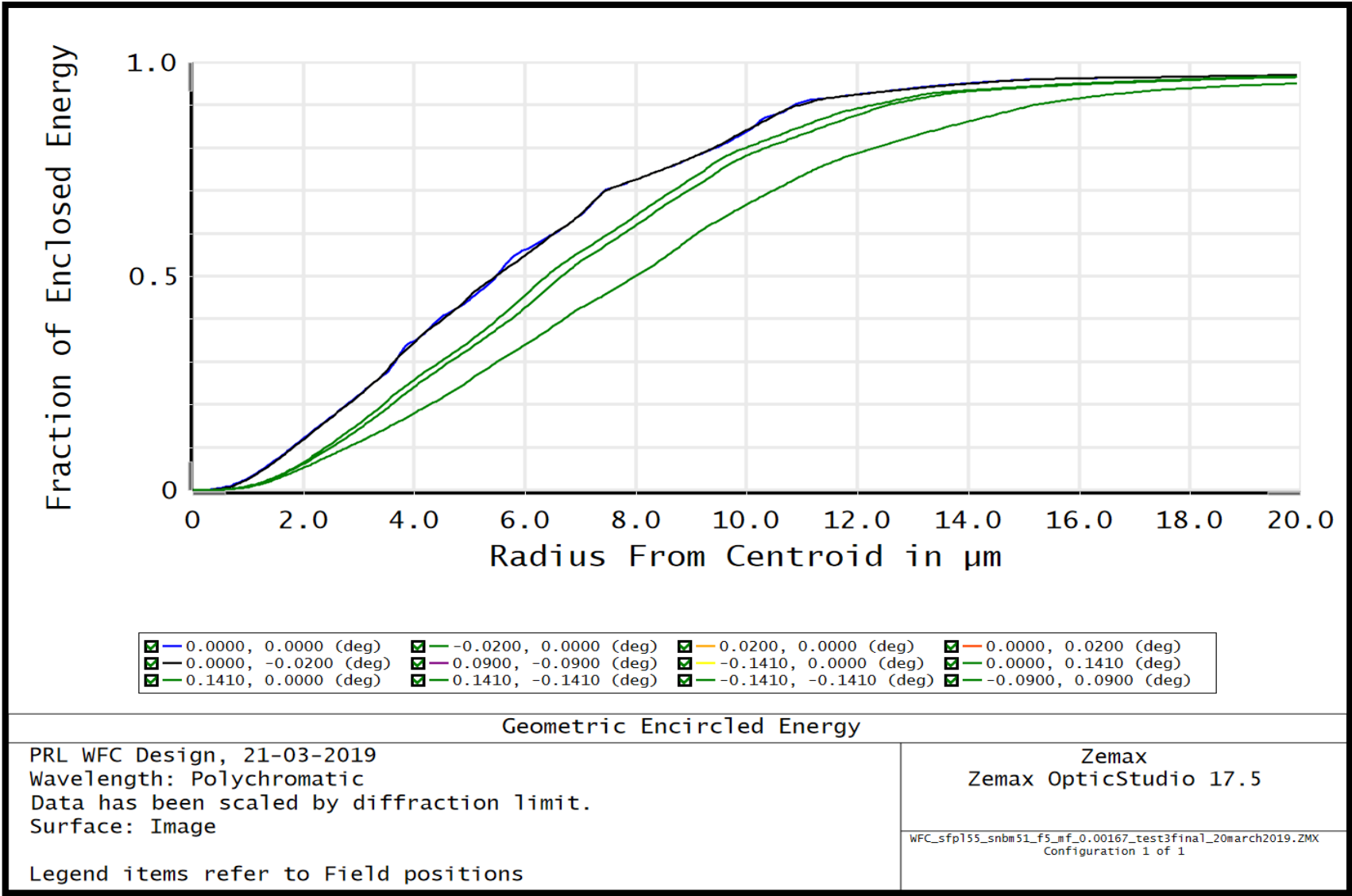


Figure 3. Design value for EE80 at 632 nm for all fields.

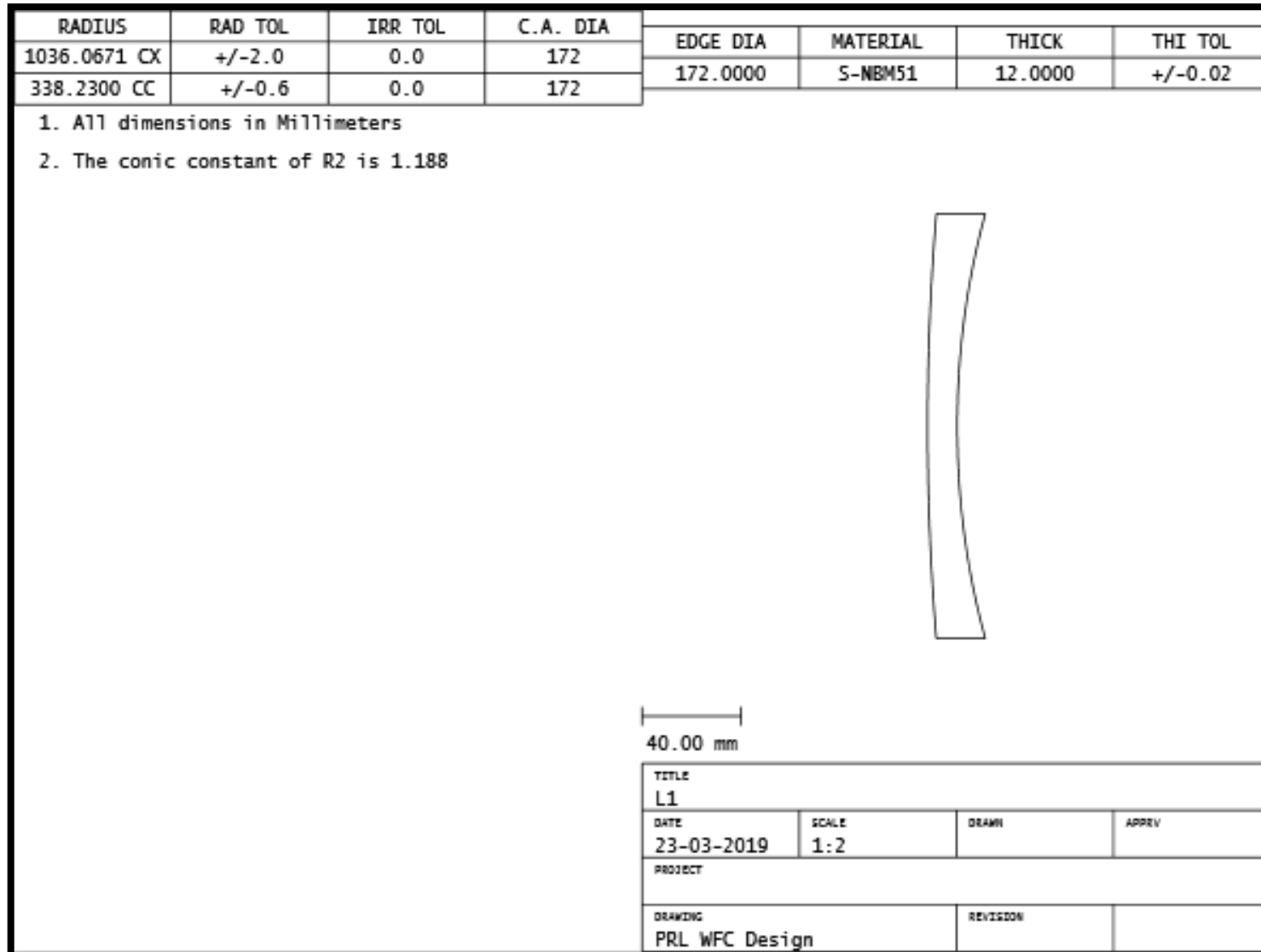


Figure 4: Design Specification of Lens-1

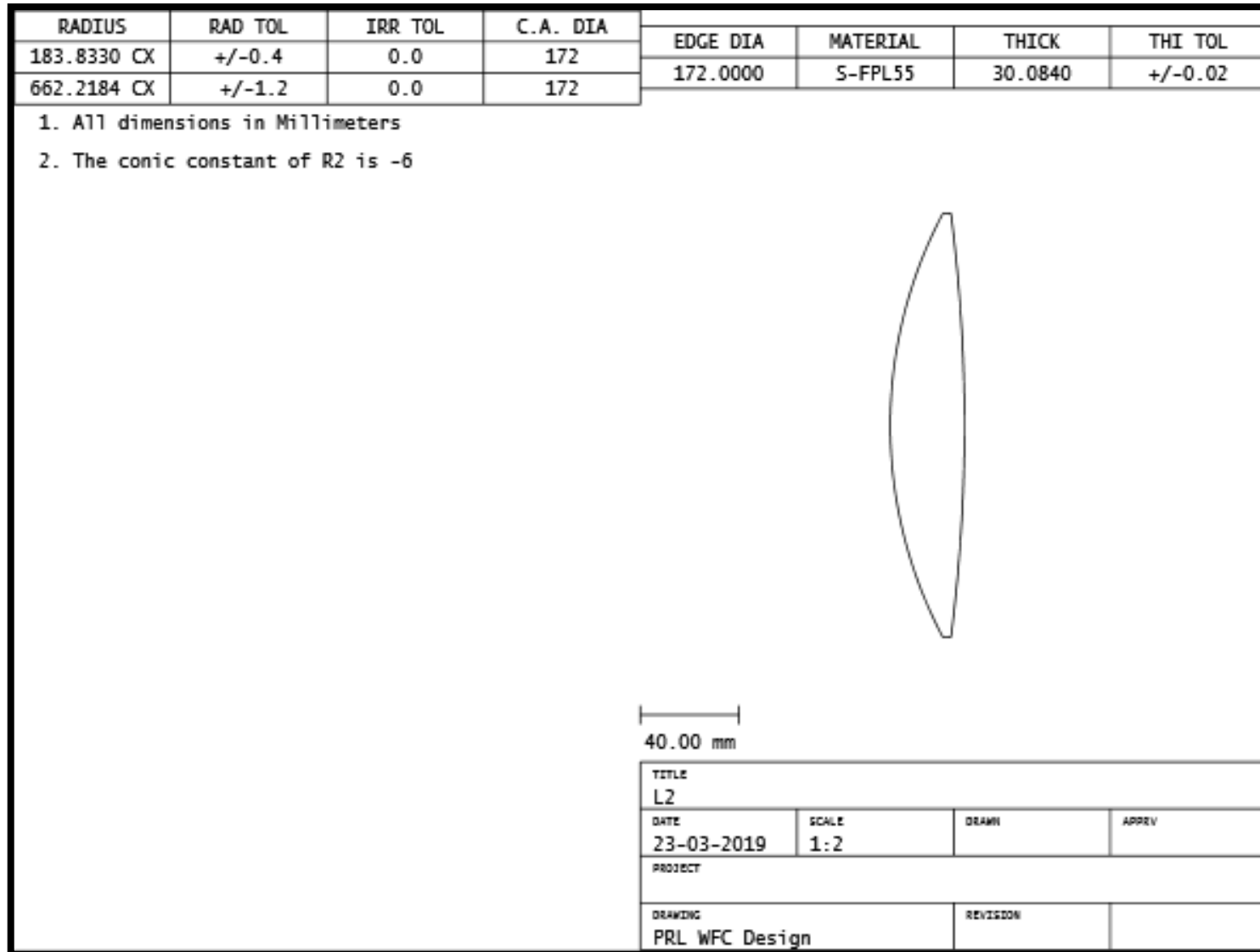


Figure 5: Design Specification of Lens-2

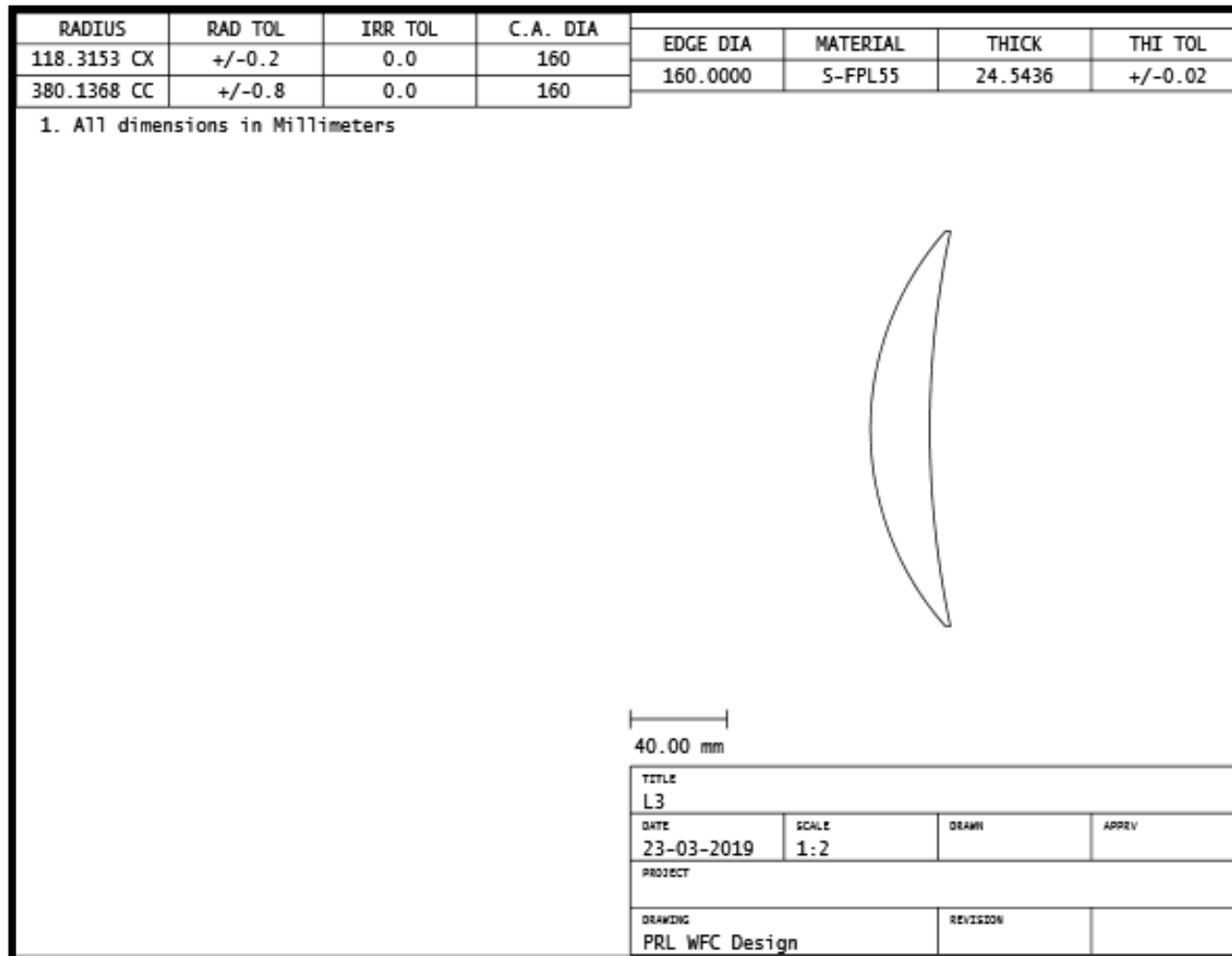


Figure 6: Design Specification of Lens-3

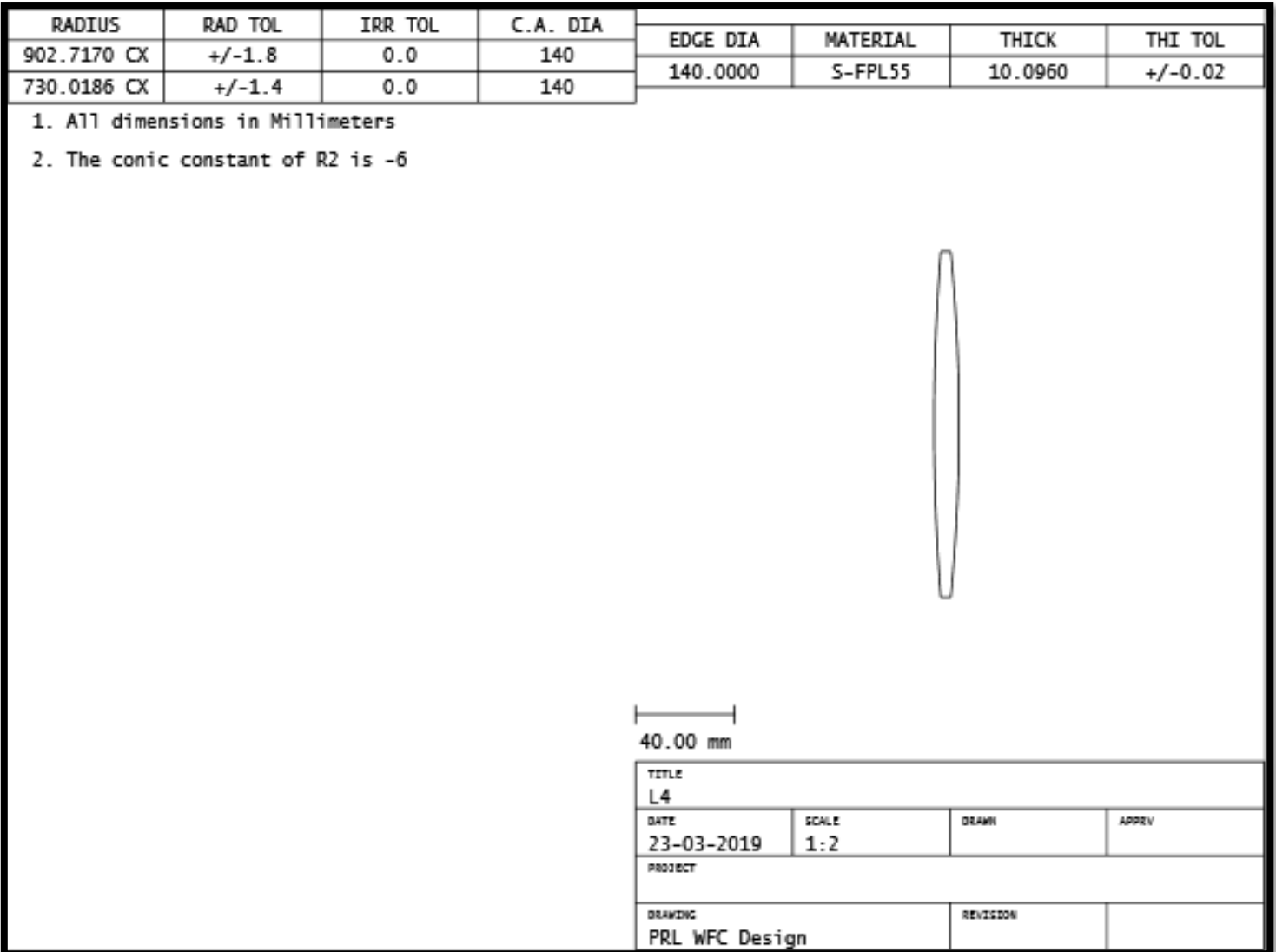


Figure 7: Design Specification of Lens-4

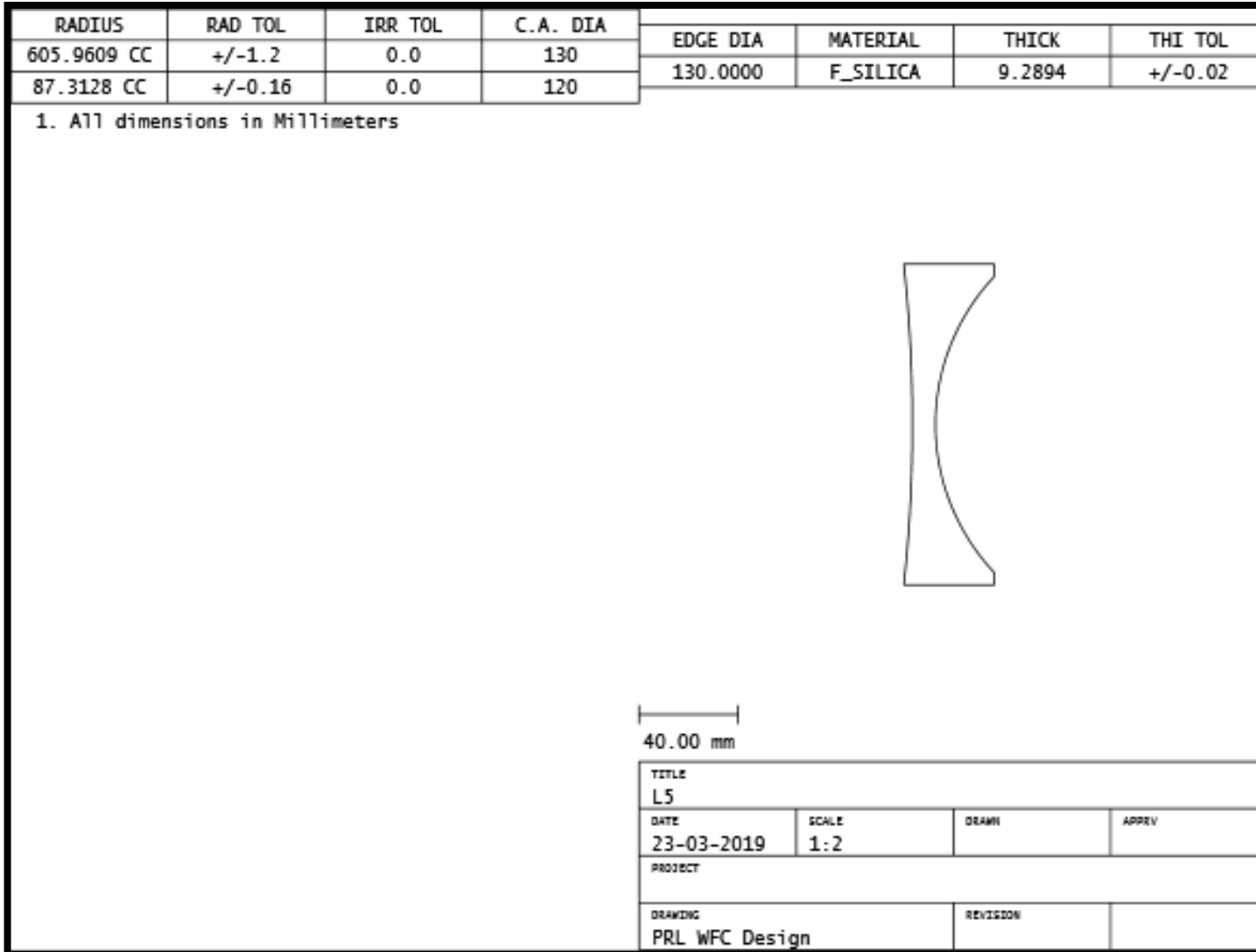


Figure 8: Design Specification of Lens-5

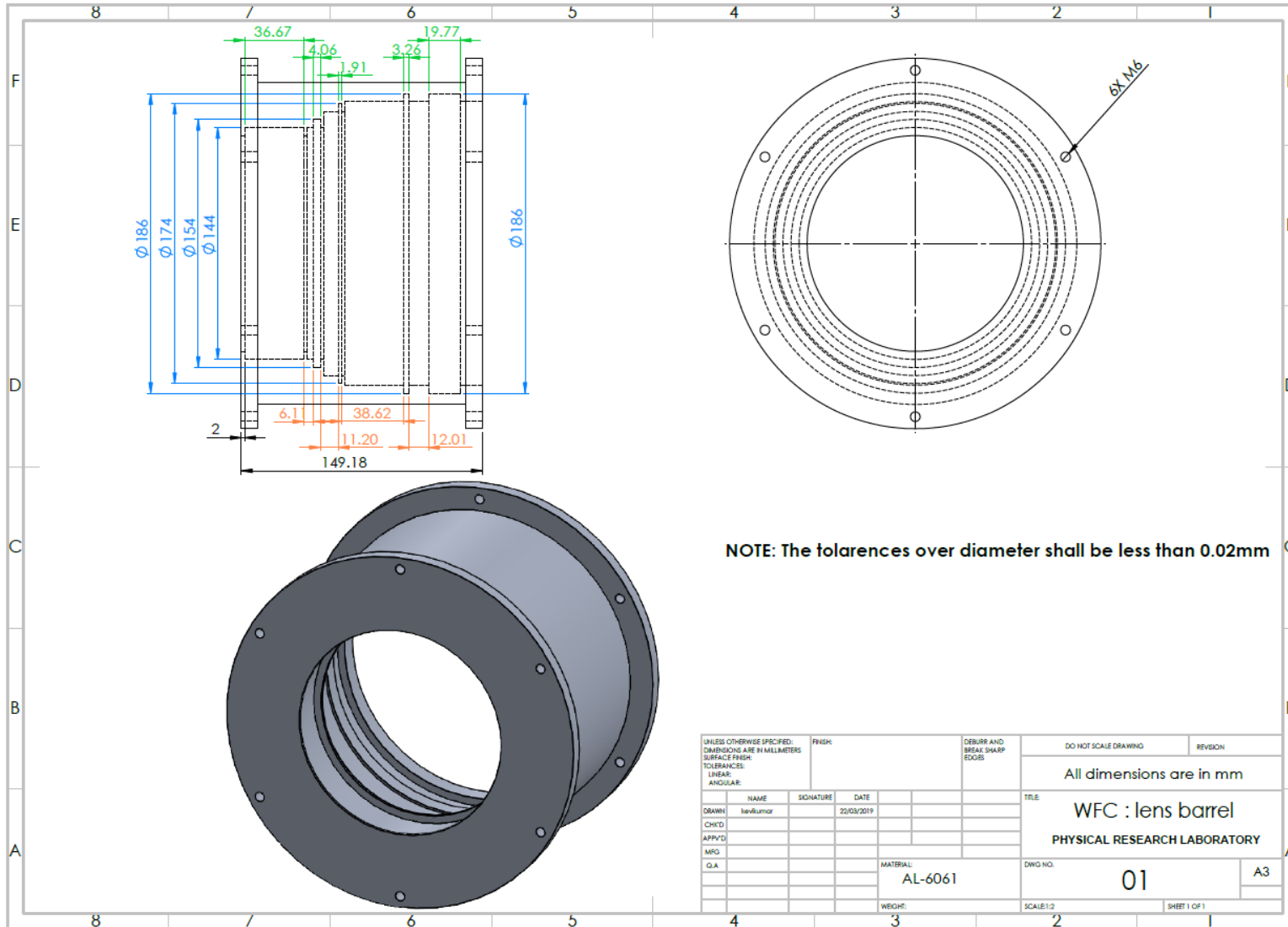


Figure 9. Mechanical design of the Integrated field correcting optics assembly (for reference only). Detail design and Fabrication drawing to be done by VENDOR after discussion during PDR.